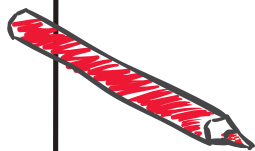




YOUR PET EMERGENCY GO-KIT

SHOULD INCLUDE:



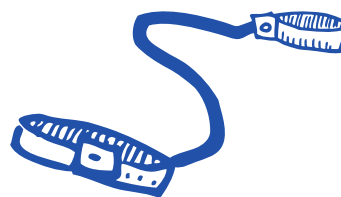
Basic first aid supplies



A 3-day supply of bottled water and the pet's preferred food, held in a waterproof container



Safety harness and leash



Waste clean-up supplies



Medications and a copy of the pet's medical records



List of veterinarians and local pet care organizations



List of the pet's feeding routine and any behavioral issues



Comfort items, such as a blanket or favorite toy, to help keep the pet calm and comfortable

